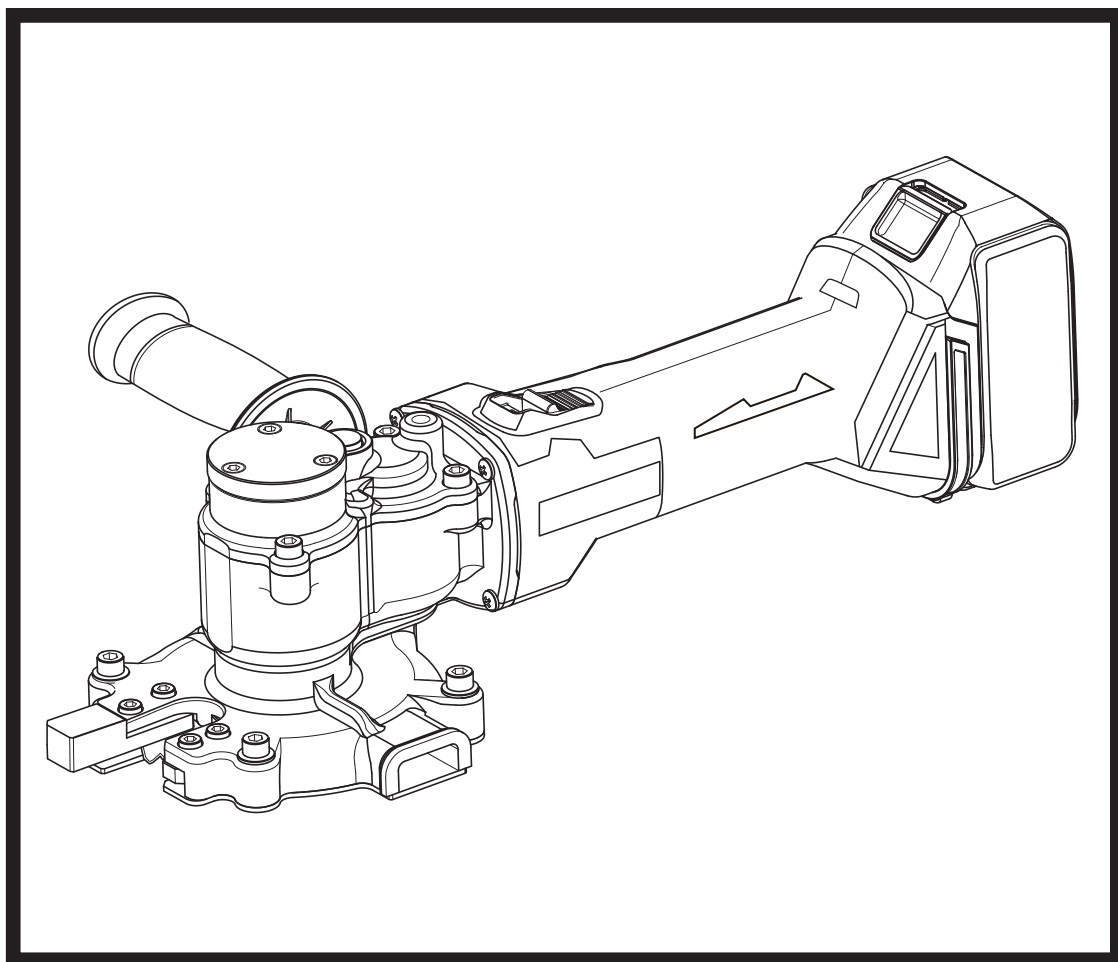


**Ogura®**

# CORDLESS SURFACE CUTTER

Model: HSC-20BL

## Instruction Manual






**Before installing and operating this machine, read, understand and follow all instructions and operating procedures. Keep this Instruction Manual with the machine.**

**Read, understand and follow all safety instructions and operating procedures. If you do not understand the instructions, or if conditions are not correct for proper operation, DO NOT OPERATE THE MACHINE. Consult your supervisor or other responsible person.**

## TABLE OF CONTENTS

IMPORTANT SAFETY INSTRUCTIONS .....	3
WARNING FOR USING TIPPED SAW BLADES .....	7
PART NAMES .....	8
BATTERY CHARGING PROCEDURE .....	9
OPERATING PROCEDURE .....	11
TIPPED SAW REPLACEMENT PROCEDURE .....	14
MAINTENANCE .....	15

<b>⚠ WARNING</b>	
	Read and understand this instruction manual before operating this machine. Failure to follow operating instructions could result in death or serious injury.

<b>⚠ WARNING LABELS RELATED TO SAFETY</b>	
	Flying debris and loud noise hazards. Wear ear and eye protection.
	Moving blade. Keep hands clear while machine is operating. Turn power off before servicing.

### SAVE THESE INSTRUCTIONS

<b>Meaning of "caution" and "warning" indications</b>	
<b>Caution:</b>	Indicates a potentially hazardous situation which, if not avoided, may result in minor or moderate injury. This is also used to alert against unsafe practices associated with events that could lead to personal injury.
<b>Warning:</b>	Indicates a potentially hazardous situation which, if not avoided, will result in death or serious injury.
<b>*** Ogura &amp; Co., Ltd. shall not be responsible for any incidental damages or personal injuries resulting from negligence of Warnings and Safety Instructions contained in the Instruction Manual.</b>	

# IMPORTANT SAFETY INSTRUCTIONS

- The "important safety instructions" described below should always be followed to reduce the risk of a fire, electric shock, and personal injury.
- Before operating the machine, read and carefully follow these instructions.
- This manual should be retained for future reference.

## WARNING

**1. Before use, read this Instruction Manual thoroughly.**

**2. Use only the charger and battery specified in this Instruction Manual.**

- Any combination, except that specified in this manual, may cause injury or damage due to explosion.

**3. Charge properly.**

- Use this charger only with the rated AC power supply. Do not use booster transformers or vehicle generator, or use the charger to supply DC power. Incorrect use may cause overheating and fire.
- Do not charge the battery at a temperature under 10°C(50°F) or more than 40°C (104°F) as this may cause an explosion or fire.

**4. Do not short-circuit the pins of the battery. Avoid storing battery in a container with other metal objects such as nails, coins, etc. This may cause overheating, fire and explosion due to short-circuit.**

**5. Guard against an electric shock.**

- Do not touch the power plug with a wet or damp hands as this may result in an electric shock.

**6. Consider the work area environment.**

- Do not expose the charger and battery to rain or use them in damp or wet locations, as this may cause overheating or electric shock.
- Keep the work area well lighted. Working where there is insufficient light may cause an accident.
- Do not use or charge the battery where there are flammable fluids or gases, as this may cause explosion or fire.

**7. Wear Safety Glasses and Protective Clothing**

- Always wear eye protection, dust mask, non-skid safety shoes, helmet and any other mandated or necessary protective clothing while using this equipment. Failure to do so may result in injury.

**8. Prevent unintentional starting.**

- Ensure the switch is in the off-position before connecting to battery, picking up or carrying the tool. Carrying power tools with your finger on the switch invites accidents.

**9. Secure the work.**

- Use clamps or a vice to hold the work. This frees both hands to properly hold, control, and operate the tool. Failure to properly secure the work may result in injury.

**10. Disconnect the tools power supply, by removing the Battery and engaging the Trigger Switch Lock, whenever one of the following situations occur.**

- The tool is not in use or is being serviced.
  - Any parts, such as a blade, are being replaced.
  - There is a recognised hazard.
- Failure to do so may result in accidental operation and damage or injury.

**11. Only use the specified accessories or attachments.**

- Use only the accessories or attachments described in this Instruction Manual and the Ogura catalog. Use of any other accessories or attachments may result in an accident or injury.

**12. Do not expose the battery to fire as it may explode or generate poisonous substances.**

**13. Under conditions of abuse, liquid may be ejected from the battery; avoid contact.**

- If contact accidentally occurs, flush with clear water.
- If liquid contacts eyes, flush with clear water and seek immediate medical help as it may result in loss of eyesight.

**14. If operating time has reduced very significantly, stop operating immediately. There is a risk of overheating which may result in burns and even an explosion.**

# CAUTION

## **1. Work area safety**

- Keep work area clean and well lit. Cluttered or dark areas invite accidents.

## **2. Keep Children and bystanders away while operating a power tool. Distractions can cause you to lose control.**

## **3. Store idle power tools correctly.**

- Store idle power tools out of the reach of children and do not allow persons unfamiliar with the power tool or the instructions to operate the tool. Power tools are dangerous in the hands of untrained users.

- Do not store the tool and battery in locations where the temperature may reach or exceed 50°C (122°F), such as a metal box or car in summer.

It may shorten the battery service life or result in smoke and fire.

## **4. Do not force power tools.**

- Use the tool at the proper speed and for which the tool was designed. Cutting too fast may result in damage to the tool or personal injury.
- Do not use the tool in a way that could cause the motor to lock. It may result in smoke or fire.

## **5. Use the power tool for the right application.**

- Use the power tool, its attachments and blades in accordance with these instructions, taking into account the working conditions and the work to be performed. Do not use for a big tool operation. Using for applications that are different from those intended may result in personal injury.

## **6. Dress properly.**

- Do not wear loose clothing or jewelry. Keep your hair, clothing and gloves away from moving parts. Loose clothes, jewelry or long hair can be caught in moving parts.
- Wear rubber gloves and non-skid safety shoes when operating a power tool outdoors. Slippery gloves or shoes may result in a personal injury.

## **7. Do not abuse a cord of charger.**

- Never use the cord for carrying, pulling or unplugging the power tool.
- Keep cord away from heat, oil, sharp edges or moving parts.
- Make sure a cord is located where it will not be stepped on, tripped over, or otherwise subjected to damage or stress. Damaged or entangled cords increase the risk of electric shock or fire.

## **8. Do not overreach.**

- Keep proper footing and balance at all times. This enables better control of the power tool in unexpected situations.

## **9. Maintain power tools.**

- Keep cutting tool sharp and clean. Properly maintained cutting tool with sharp cutting edges are less likely to bind and are easier to control. Damaged blades may cause personal injury.
- Keep handles dry, clean and free from oil and grease. Slippery handles may result in personal injury.
- Check power cord of the charger regularly. Damaged cord will increase risk of electric shock or short circuit resulting in fire.

## CAUTION

### **10. Remove any adjusting key or wrench before turning the power tool on.**

- A wrench or key left attached to the tool may result in personal injury.

### **11. When charging outdoors, use a cabtyre cable or a cabtyre extension cord.**

- Use only the accessories or attachments described in this Instruction Manual and the Ogura catalog. Use of any other accessories or attachments may result in an accident or injury.

### **12. Stay alert, watch what you are doing and use common sense when operating a power tool.**

- Do not use a power tool while you are tired or under the influence of drugs, alcohol or medication. A moment of inattention while operating power tools may result in serious personal injury.

### **13. Check for damaged parts before use.**

- Check safety covers and other parts that may affect the tools function for breakage or damage. If damaged, replace or repair before use.
- Check for misalignment or binding of moving parts, breakage of parts and any other conditions that may affect the power tool's operation. If damaged, have a power tool repaired before use.
- Do not use damaged extension cord. If damaged replace it before use. Use of damaged extension cord will increase risk of electric shock or short circuit resulting in fire.

- Do not use the charger if the power cord or power plug is damaged or if it is dropped or it is damaged in any way. A damaged charger will increase risk of electric shock or short circuit resulting in fire.

- Do not use a power tool if the switch doesn't turn it on and off. Any power tool that cannot be controlled with the switch is dangerous and must be repaired.

- Follow instructions for lubricating and changing accessories.

- Disconnect the battery from the power tool before making any adjustment or changing accessories. Such preventive safety measures reduce the risk of starting the power tool accidentally.

### **14. Have your power tool serviced by a qualified repair person using only identical replacement parts. This will ensure that the safety of the power tool is maintained.**

- Do not disassemble or modify the battery and charger.
- This power tool is designed in conformity with safety regulations. Do not modify a power tool.
- Have your power tool serviced if it overheats or if any other unusual symptoms are observed.
- Do not permit an unqualified person to repair the tool as this may compromise the tool safety and result in accident and personal injury.

# ⚠ CAUTION

**1. Hold the tool securely while it is in use.**

- If the tool is not held securely, you may be injured.

**2. Keep your hands and face away from the moving parts.**

- They may cause an injury.

**3. Release the Trigger Switch immediately to stop operation when the tool is out of order or makes an abnormal sound during use. Have it inspected and repaired by an authorized service center.**

- Failure to do so may result in damage or injury.

**4. If you drop or strike the tool, check carefully that the body is not damaged, cracked, or deformed.**

- Any such damage could cause injury.

**5. Do not short the battery. A battery short can cause a large current flow, overheating, possible burns and even a breakdown.**

- Do not touch the terminals with any conductive materials.
- Avoid storing battery in a container with other metal objects such as nails, coins, etc.
- Do not expose battery to water or rain.
- Do not cut the cord.

**6. Do not operate the tool or charge the battery in explosive atmospheres, such as in the presence of lacquer, paint, benzine, thinner, gasoline, gasses or adhesive. This may cause an explosion or fire.**

**7. Do not charge the battery on paper, cardboard, cloth, cushions, mats, carpets, vinyl or in the presence of dust. This may cause fire.**

**8. Do not expose the Charger to water or metal items that can short out the charging terminals.**

**9. Do not use charger for any other purpose than charging the battery.**

**10. Make sure tipped saw blades have no chips or cracks before using the tool.**

**11. Do not use water or cutting oil when cutting.**

**12. Use only Ogura genuine tipped saw blades.**

**13. Do not leave the tool on the floor with switch locked on. The tool will run continuously and it may cause personal injury.**

**14. Do not operate the tool close to flammable and fragile items or personnel not necessary to the operation. During cutting hot debris and sparks will be ejected from the tool which may cause damage to the surroundings, fire or personal injury.**

**15. Do not cut concrete. It causes damage to the tool and may result in personal injury.**

**16. Check for the presence of people on the ground during operation in an elevated place. Any materials or tools dropped may cause an accident.**

**17. If during charging, there is an abnormal generation of heat, stop charging immediately by disconnecting the battery. Continuing charging may cause smoke, fire or explosion.**

**18. Do not allow anything to cover or clog the motor vents. This may cause the motor to overheat.**

**19. When using an extension cord with the charger, it is recommended to use a cord with the cross section below and with a length as short as possible. For charging outdoors, use a cord rated for outdoor use.**

Relation between usable cord thickness and maximum length

Cord size (Nominal cross sectional area of conductor)	Maximum cord length
0.75 mm <sup>2</sup>	20 m
1.25 mm <sup>2</sup>	30 m

# WARNING FOR USING TIPPED SAW BLADES

## Work area safety

---

1. Ensure the Safety Cover is fixed correctly. Without the Safety Cover, when Tipped Saw Blades are damaged, pieces of the blades fly off and can cause serious personal injury.
2. Keep bystanders away from operations. Even with the Safety Cover fitted, damaged blades or hot debris can fly out of the cover, resulting in serious personal injury.
3. Sparking may occur when cutting with Tipped Saw Blades. Do not use the tool where there is the risk of fire or explosion.
4. Cutting with Tipped Saw Blades is noisy. Consider the work area environment.

## Dress and protective equipment

---

5. Wear protective equipment: safety glasses, safety shoes, dust mask and helmet. Even with the Safety Cover fitted, damaged blades or hot debris can fly out of the cover, resulting in personal injury.
6. Dress properly. Do not wear a tie, loose clothing or knit gloves. Keep hair covered with a hair cover or a cap to be away from rotating blades.

## Before use

---

7. Ensure that Tipped Saw Blades are not deformed, chipped, cracked or worn-out. Do not use a Tipped Saw if any damage or wear is found. Cutting under such conditions may cause further damage to the blades and serious personal injury.
8. Do not use the Tipped Saw for any application other than that stated in the tool specification on page 2. Using the Tipped Saw for other applications can cause excessive wear, detachment of blades, low cutting performance and abnormal generation of heat, resulting in damage to the blades and serious personal injury.

## Tipped Saw replacement

---

9. When replacing the Tipped Saw, ensure that the battery is removed from the tool to prevent accidental operation and personal injury.
10. Ensure there is no one in the surroundings before operation and no abnormal sounds or abnormal vibrations occur when operating. Operating with abnormal sounds or abnormal vibrations can damage the blades resulting in serious personal injury.

## During operation

---

11. Do not use the Tipped Saw for any purpose other than cutting. Do not subject the blades to damage or stress. It can break the blades resulting in serious personal injury.
12. Hold the material firmly, in a vice or similar, so that it cannot move when cutting. If the material moves, the operation becomes unstable and cannot be controlled, resulting in damage to the blades and possible serious personal injury.
13. Start cutting only after the Tipped Saw has reached maximum speed. If the Tipped Saw is set against the material before the motor is started, the blades will be overloaded and damaged, resulting in possible serious personal injury.
14. Do not cut in zigzags, curves, diagonals, or use the side of the blade to prise or for any other purpose.
15. If during cutting, there is an abnormal sound, abnormal vibration, or if the cutting parts are badly worn, stop operation. Continuing the operation under such conditions will damage the Tipped Saw blades with the result that chips may be ejected causing serious personal injury.
16. Continuous operation makes the Tipped Saw blades hot and reduces the cutting performances.

## Maintenance

---

17. If there is deformation, a crack or damage on the Tipped Saw, stop the operation. Continuing the operation under such conditions will further damage the Tipped Saw which may break up. Ejected broken parts can cause serious personal injury.
18. Only keep and use Tipped Saws that are in good condition and the blades sharp and clean.

### **WARNING**

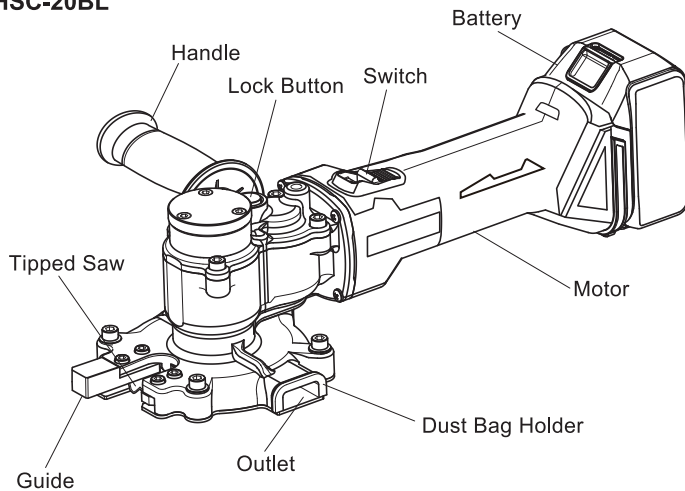
Always wear protective clothing; safety glasses, safety shoes, dust mask and helmet.

### **WARNING**

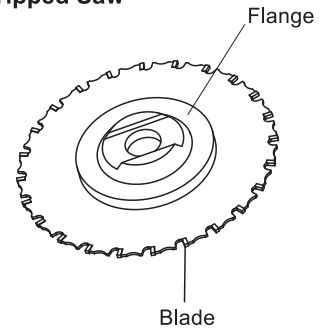
Use only Ogura supplied Tipped Saw. Using non Ogura parts may damage the tool and can result in serious accident or injury.

# PART NAMES

## ■HSC-20BL



## ■Tipped Saw



## ■Specifications

Motor	DC magnet motor	
Battery	Lithium-ion battery (BL1850), 5.0 Ah, 45-minutes charge	
Voltage	18 V D.C.	
Battery Charger	Lithium-ion battery charger (DC18RC)	
Input Voltage	110-115 V/220-240 V A.C. in single phase	
Input Frequency	50-60 Hz	
Input Capacity	240 W	
Output Voltage	7.2-18 V D.C.	
Output Current	9 A D.C.	
Weight	4.0 kg (including a battery)	
Dimensions	471 mm(L)X137 mm(W)X139 mm(H) (without handle)	
Cutting Capacity	D10 to D20 mm for Grade 40 rebar (490 N/mm <sup>2</sup> 71,000 psi) D10 to D20 mm for round steel bar (440 N/mm <sup>2</sup> 63,800 psi)	
Revolutions Per Minute	2200 rpm	
Blade Spec	Out dia: 110 mm Tip thickness: 1.5 mm	
Noise Level	Sound Pressure Level	78.2 dB(A) with no load
	Sound Power Level	87.6 dB(A) with no load

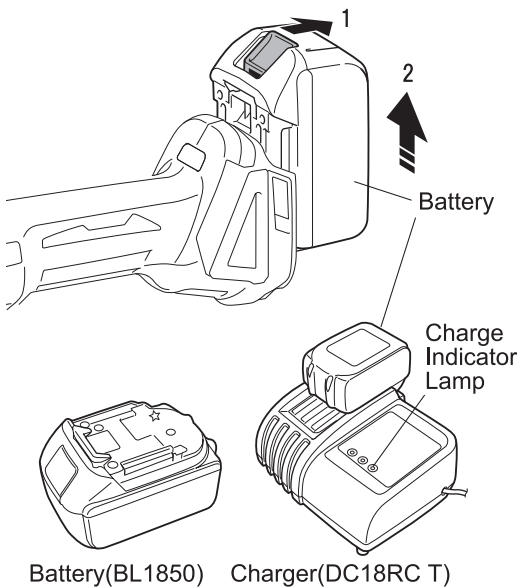
● Specifications and design may be subject to change without prior notice.

## ■Standard Accessories

Battery Charger (DC18RC) .....	1
Battery (BL1850) .....	1
Battery Cover .....	1
Hex Wrenches (M5) .....	1
Carrying Case .....	1
Tipped Saw .....	1
Dust Bag .....	1



# BATTERY CHARGING PROCEDURE



Battery(BL1850) Charger(DC18RC T)

	Battery Charger (DC18RC T)
Battery (BL1850)	Approx. 45 minutes

## Notes

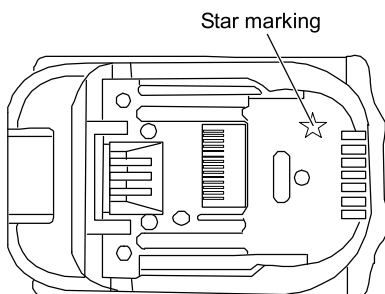
- Battery Charger DC18RC T is only to be used for charging the batteries. Do not use it for any other purpose.
- A new Battery or a Battery that has not been used for a long time may not be fully charged by one time charging. In such cases full charge should be achieved after the Battery has been discharged and charged two or three times.
- The charge Indicator Lamp may repeatedly blink (red), when the Battery is put on charge immedi-

Before using the tool the Battery should be charged using the Charger provided.

1. To remove the Battery first depress the two locking buttons (one on either side) and then holding the battery firmly pull it out of the housing.
  2. Connect the Battery Charger to an AC power supply of 110-115V/220-240V. The green Indicator Lamp will blink.
  3. Fully insert the Battery into the Battery Charger making sure that the lug on the Battery is inline with the slot in the Battery Charger. The charge Indicator Lamp (red) will illuminate to show charging has started.
  4. When charging is completed the charge Indicator Lamp will turn green and the Electronic Buzzer will beep for about five seconds.
  5. Remove the Battery from the Battery Charger and replace it in the tool using the reverse procedure to its removal.
- For the correct combination of Battery and Battery Charger and the charging time, see the table on the left.
  - After charging is completed, install the battery in the tool making sure it is locked in position.

## Battery protection system (Lithium-ion battery with star marking)

Lithium-ion batteries with a star marking are equipped with a protection system. This system automatically cuts off power to the tool to extend battery life. The tool will automatically stop during operation if the tool and/or battery are placed under one of the following conditions:



### Overloaded:

The tool is operated in a manner that causes it to draw an abnormally high current. In this situation, switch off the tool and stop the application that caused the tool to become overloaded. Then switch on again to restart.

If the tool does not start, the battery is overheated. In this situation, let the battery cool before switching on again.

### Low battery voltage:

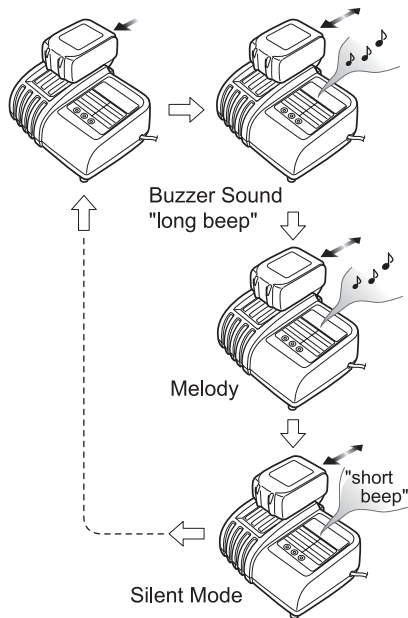
The remaining battery capacity is too low and the tool will not operate. In this situation, remove and recharge the battery.

## BATTERY CHARGING

---

### Changing the Preset Melody for “Charging Completed”

---



1. Inserting the battery cartridge into charger will cause the preset melody for “Charging Completed” to briefly sound.
2. Removing and re-inserting it within five seconds will change the preset melody.
3. Each time the above action is repeated the melody will change.
4. When the desired melody is achieved, leave the battery cartridge in the charger to save the melody and begin the charge. When the "short beep" mode is selected, the melody does not sound. (Silent mode)
5. On completion of the charge, the green light stays on, the red light goes out and the saved melody or buzzer (long beep) will sound to notify completion of charge. (There is no sound when in silent mode)
6. Preset melody remains stored even when the charger is unplugged.

### Trickle charge (Maintenance charge)

---

If you leave the battery cartridge in the charger after it has been fully charged, the charger will switch into its “trickle charge (maintenance charge)” mode and keep the battery cartridge fresh and fully charged.

To maintain product SAFETY and RELIABILITY, any repairs, maintenance or adjustment should be performed by OGURA Authorized Service Centers, using OGURA replacement parts.

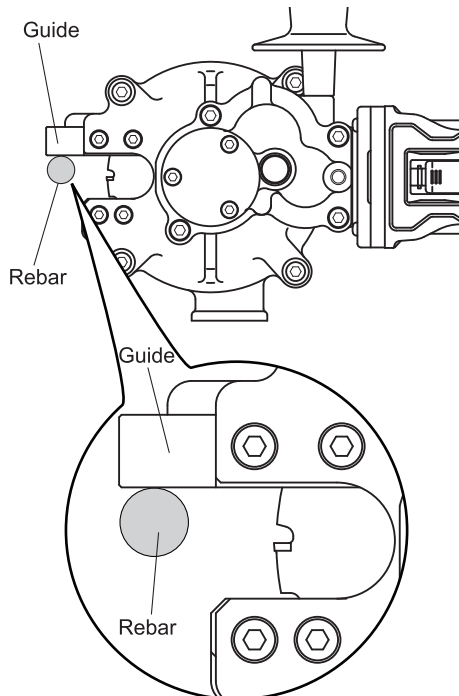
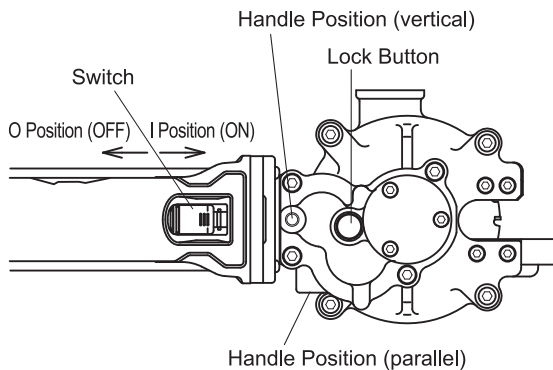
### Cooling system

---

- The charger is equipped with a cooling fan to cool the battery during charging and to optimise battery performance. The sound made by the cooling system in operation should not be a concern unless the warning light is flashing.
- Yellow light will flash for warning in the following cases.
  - There is a problem with the cooling fan
  - The battery is not being sufficiently cooled because the cooling vents are clogged or for some other reason.Note: The battery can still be charged in spite of the yellow warning light but the charging time will be longer than usual in this case.

Check the cooling fan for unusual noises and that the cooling vents are not obstructed or clogged with dust.
- The cooling system is in order even if the cooling fan is not heard, if the yellow warning light is not flashing.
- Always keep the cooling vents on the charger and battery clean and free of obstructions.
- The charger should be sent for repair or maintenance, if the yellow warning light is often flashing.

# OPERATING PROCEDURE



## ⚠ WARNING

Before the battery is inserted into the tool, ensure that the Switch is at the "O" position and the Switch is off.

## ⚠ CAUTION

1. Push the Lock Button and ensure that the Button comes up when it is released. If the Lock Button will not come up when it is released, the Tipped Saw will be prevented from rotating when the tool is operated resulting in damage to parts and the motor to burn out.
2. Slide the Switch to the "I" position and ensure it stays there and does not move. Then push down on the rear of the Switch to ensure that the Switch moves to the "O" position automatically.
3. Ensure that the bolts retaining the Tipped Saw Cover and all other bolts are tightened firmly.

## Operation

1. Screw the Handle into threaded hole at the vertical or parallel position for easier operation.
2. Ensure that the Switch is at "O" position.

## ⚠ CAUTION

As a safety function of this tool, the Motor cannot be energised when the battery is inserted with the Switch at "I" position. For further safety, please note that the battery should be inserted with the Switch at "O" position.

3. Insert the battery into the tool.
4. Slide the Switch to "I" position. The motor is on. Then push down on the forward end of the Switch to lock it for operating continuously.

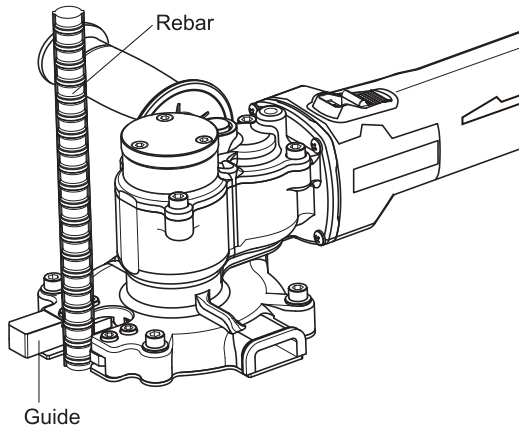
## ⚠ WARNING

Do not touch the rotating parts as they can cause serious injury.

5. Position the Guide in the opening against the rebar. Then push the tool forward slowly to start to cut the rebar.

## ⚠ CAUTION

When cutting, both at the beginning and near the end, slow down the tool's forward (cutting) movement. A fast cutting action, at these times, will damage the Tipped Saw blades and can cause injury from flying debris.



### **⚠ CAUTION**

1. Hold the tool firmly so that it does not shake when cutting. Cutting with the tool shaking will shorten the life of the Tipped Saw and damage the blades.
2. Position the tool so it is at 90 degrees to rebar to be cut. If the tool is not at 90 degrees to the rebar, it can cause shaking and overload the tool.
3. Do not start cutting immediately after the motor is switched on. Allow the Tipped Saw to reach full speed before beginning to cut.
4. Do not remove the battery when the motor is switched on. Doing so can cause damage to the motor's electronics.

6. After finishing the cut, push down on the rear end of the Switch which will cause the Switch to move to the "O" position and turn off the motor.

### **⚠ CAUTION**

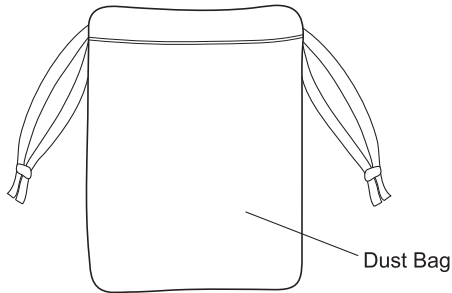
This tool is designed to cut rebar. Please contact the manufacturer or your local dealer if you want to cut other materials. Cutting other materials will damage the Tipped Saw blades.

### **Caution when cutting**

1. Ensure that the Tipped Saw blade is well away from the material to be cut before switching on.
2. Slow down the forward (cutting) movement of the tool when approaching the end of the cut. This is especially important when the piece to be cut is less than 50 mm in length. The piece cut off can strike the Tipped Saw blades, damaging them and cause serious injury.
3. When the Tipped Saw blades become blunt or chipped, replace the blade. Continuing to use it in this condition will overload the tool.
4. If the material moves or shakes, when being cut, stop the operation and properly secure the material.
5. Do not hold by hand the material to be cut. Doing so may result in personal injury.
6. Do not cut rebar that in size or hardness exceeds the cutting capacity of the tool.

### **Replace the Tipped Saw Blade when any of the below occurs.**

1. Warning Lamp (red) blinks frequently even though the battery is fully charged.
  2. The Tipped Saw blades are chipped or worn.
  3. The cutting speed is very slow.
  4. The surface of the cut piece is discolored by heat.
- NOTE: Tipped Saw blades cannot be resharpened.



## How to fit the Dust Bag

1. Place the open end of the Dust Bag over the Dust Bag Holder and secure in place with the draw strings.
2. Give the bag a sharp tug to ensure it is properly secured.

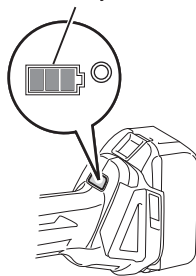
### **⚠ CAUTION**

The Dust Bag is made from nonflammable material but very hot debris, such as that produced when cutting with a worn Tipped Saw blade, can melt the material. Be aware of this possibility when using the Dust Bag.

Table 1

Battery indicator status ■:On □:Off ◻:Blinking	Remaining battery capacity
	50% - 100%
	20% - 50%
	0% - 20%
	Charge the battery

Battery Indicator



## Battery Indicator function

When you turn the tool on, the battery indicator shows the remaining battery capacity. (see table 1)

## Automatic speed change function

The tool has 'high speed mode' and 'high torque mode'. It will select the operating mode automatically, according to the work load. When the mode indicator lights up during operation, the tool is in high torque mode. (see table 2)

## Tool / battery protection function

The tool will automatically stop during operation if the tool or battery is placed under one of the following conditions:

- The tool is overloaded
- The tool overheats

If the tool is repeatedly operated under these conditions, the protection system will lock the tool.

## Overload protection

If the tool is overloaded during cutting, it will automatically stop. In this situation, turn the tool off and remove the cause of the overload then restart the tool.

## Protection lock

When the protection system works repeatedly, the tool will lock and the battery indicator shows the state as table 3.

## Overheat protection for tool

When the tool is overheated, the tool stops automatically and the battery indicator shows the state as table 4.

In this situation, let the tool cool before turning the tool on again.

Table 2

Mode indicator status	Operation mode
	High speed mode
	High torque mode

Mode Indicator

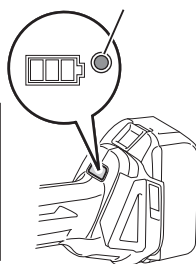


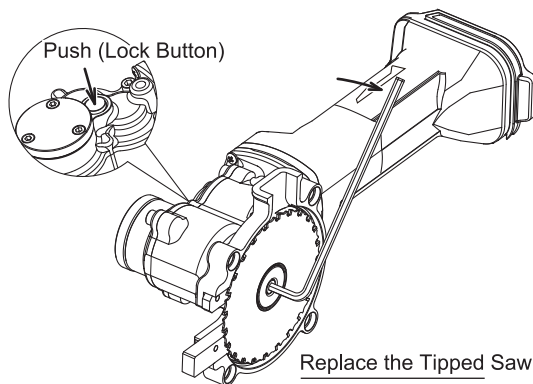
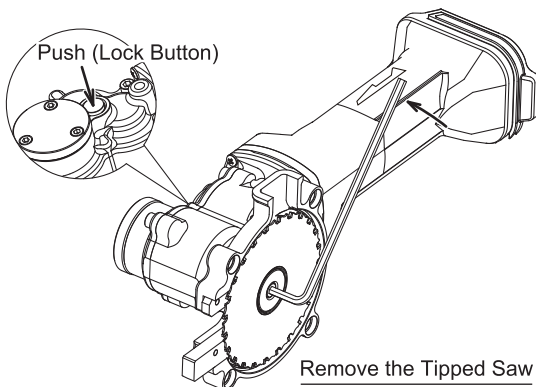
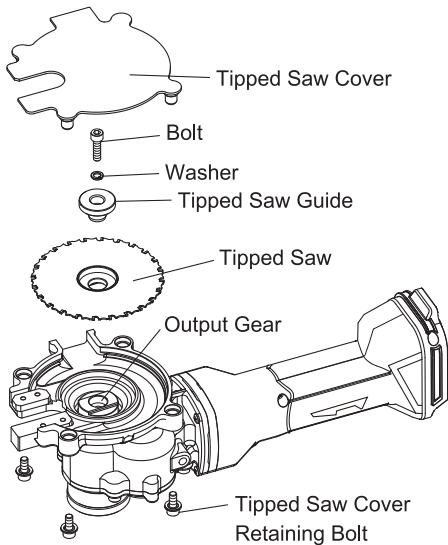
Table 3

Battery indicator	■:On □:Off ◻:Blinking
	Protection lock works

Table 4

Battery indicator	■:On □:Off ◻:Blinking
	Tool is overheated

# TIPPED SAW REPLACEMENT PROCEDURE



## **⚠ WARNING**

Switch off the tool and remove the battery before replacing the blade, to prevent accidental operation resulting in serious personal injury.

## **How to remove the Tipped Saw**

1. Remove the Tipped Saw Cover Retaining Bolts (4 pieces) with a hexagonal wrench.
2. Remove the Tipped Saw Cover.
3. Insert a hexagonal wrench into the bolt retaining the Tipped Saw Guide.
4. Push in the Lock Button and using the hexagonal wrench as a handle, rotate the Tipped Saw blade until it is prevented from further rotation by the Lock Button.

## **⚠ CAUTION**

Ensure that the Lock Button is completely pushed in. If not, the hexagonal wrench can rotate and may cause personal injury.

5. With the Tipped Saw locked, turn the hexagonal wrench counterclockwise to loosen and remove the bolt and washer.
6. Remove the Tipped Saw Guide and the Tipped Saw.

## **How to replace the Tipped Saw**

## **⚠ CAUTION**

1. Use only Ogura supplied Tipped Saw. If reusing a Tipped Saw, ensure it is not worn, chipped or damaged.
2. Clean and remove all debris and dirt from the Tipped Saw and parts. Debris and dirt can unbalance the Tipped Saw making it wobble during cutting.

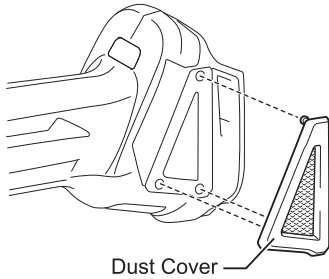
1. Fit the Tipped Saw over the Output Gear, making sure that the slot in the flange is properly aligned with the key.
2. Replace the Tipped Saw Guide.
3. Replace the Bolt and Washer.
4. Push in the Lock Button completely to prevent the Tipped Saw rotating and tighten the Bolt with the hexagonal wrench.

## **⚠ CAUTION**

Ensure that the Lock Button is completely pushed in. If not, the hexagonal wrench can rotate and may cause personal injury.

5. Replace the Tipped Saw Cover.
6. Tighten the Tipped Saw Cover Retaining Bolts (4 pieces) with a hexagonal wrench.

# MAINTENANCE



## **⚠ CAUTION**

Always ensure that the tool is switched off and the battery is removed before attempting to perform inspection or maintenance.

Remove the Dust Cover from the air vent and clean it for proper air circulation.

## **⚠ CAUTION**

Clean the Dust Cover when it becomes clogged. Continuing operation with a clogged dust cover may damage the tool.









# EC Declaration of Conformity

We, OGURA & CO., LTD.  
of 2661 Hongo, Ebina City, Kanagawa 243-0417, Japan

In accordance with the following Directive:

2006/42/EC Machinery Directive  
2004/18/EC The Electromagnetic Compatibility Directive

declare under our sole responsibility that the product,

**Type of Product** : Cordless Surface Cutter  
**Model Name** : HSC-20BL

to which this declaration related is in conformity with the following standards:

**Machinery Directive:**

**EN 60745-1:2009+A11:2010**

Hand-held motor-operated electric tools – Safety – Part 1: General requirements

**EN 60745-2-8:2009**

Hand-held motor-operated electric tools – Safety –  
Part 2-8: Particular requirements for shears and nibblers.

---

**EMC Directive**

**EN 55014-1:2006+A1:2009+A2:2011**

Electromagnetic compatibility – Requirements for household appliances, electric tools and  
similar apparatus – Part 1: Emission

---

following the provisions of

The person stated below will keep the following technical documentation:

- operating and maintenance instructions
- technical drawings
- description of measures designed to ensure conformity
- other technical documentation, e.g. quality assurance measures for design and production

**Person authorized to compile the technical file:**

**James Jones**

**Star Lane, Great Wakering, Essex SS3 0PJ, England**

---

# Ogura®

2661 Hongo, Ebina City,  
Kanagawa-pref., Japan 243-0417  
TEL : 046-238-1285 FAX : 046-238-4188

---

## Ogura & Co., Ltd.

SO.8503850/1503